

Saliva Sample Collection & Shipping Instructions

SAMPLE COLLECTION

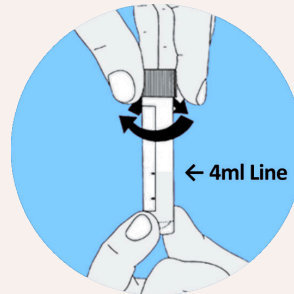
Do **NOT** eat, drink, smoke, chew gum, or brush your teeth for **30 minutes** before collecting the sample. If needed, a more detailed set of instructions is included with the spit collection kit.



1 Remove the collection funnel and tube from the pack. Unscrew the cap from the tube and screw the collection funnel on to the tube gently.



2 Start spitting into the funnel. Continue spitting into the funnel until the level of the liquid reaches the **4 ml line**.



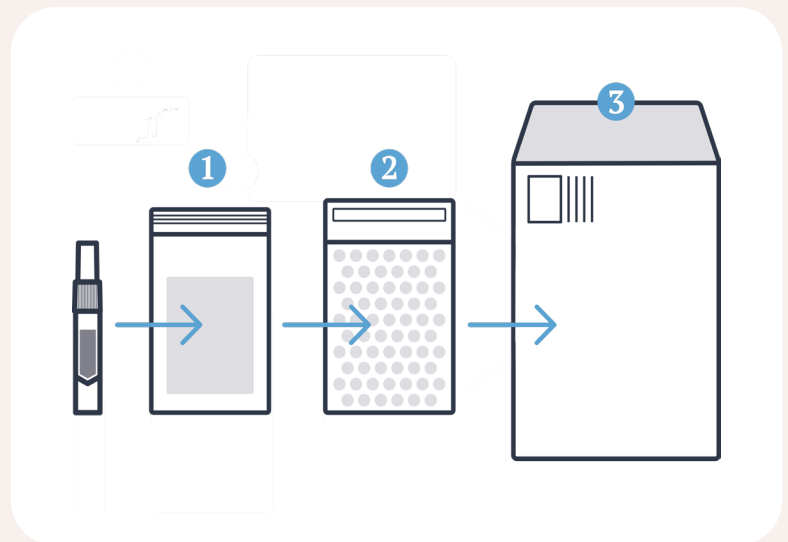
3 Unscrew the collection funnel and replace the tube cap tightly. Discard the funnel.



4 Shake the tube gently for 5 seconds to mix the saliva with the solution.

PACKAGING INSTRUCTIONS

- 1** Insert the **TIGHTLY** sealed tube into the small plastic bag with absorbent pad inside and close the zip seal.
- 2** Place the sealed bag inside the bubble pouch, remove the white adhesive strip and seal the bubble pouch closed.
- 3** Place the closed bubble pouch inside the white, pre-paid envelope.



SHIPPING INSTRUCTIONS

Place the envelope in any USPS mailbox. If you are unable to locate a mailbox, please visit the USPS website at www.usps.com.